



## Radiomaster TX16s Custom Screen Setup

Your Radiomaster TX16s has the capability to customize all kinds of things, including the display screen. It's quite likely that you have already done some of that, but most likely, that has been haphazard, unplanned, inconsistent and unaware of some very helpful options. In this document and the associated YouTube video, we would like to help you to make it just the opposite!

### Three areas to customize with images

- The "Splash"Screen

This is the image that comes onto the screen when you first start up the radio. It's cool to have something unique for you. Get yourself in the right mood when you are getting ready to fly, or impress your mates!

- The background to the main screen

The default Edge TX background is nice, and that can most like be said as well for any of the other default backgrounds, but it's too busy. Mine had this one with the silhouette of a man and a sailplane. But given that you are going to display the plane you are going to fly, there's no need to have another one there.



- The image of the plane you are going to fly

Edge TX has images of a number of planes, and you can find others online, but you can also take a photo of your own.



### Other customization

The most important part of your screen is the information it displays that you need to know to prepare and fly your plane. Essentially you will most likely have some tones or voice messages to get you some information, and the rest will be what's displayed on your screen.

Following the details on customizing the images, we will make some suggestions regarding this. Of course, we are aware that personal preferences will result in a wide variety of appropriate information to display, and how to display it.

### Quick reference

For some of you, this is all you need. And, for the rest, once you have learned how to do it, these are the things that you might need to be reminded of. This information is appropriate for a current Radiomaster TX16s with color touch screen running Edge TX at the time of writing.

## Splash screen

- File name: splash.png
- Size: 480x272
- Location folder: IMAGES

## Background for main screen

- File name: background.png
- Size: 480x272
- Location folder: THEMES/Default or THEMES/EdgeTX or whatever theme you are using

## Images for your models

- File name: whatever.png Stick to 8 or less characters, no spaces.
- Size 192x96
- Location folder: IMAGES

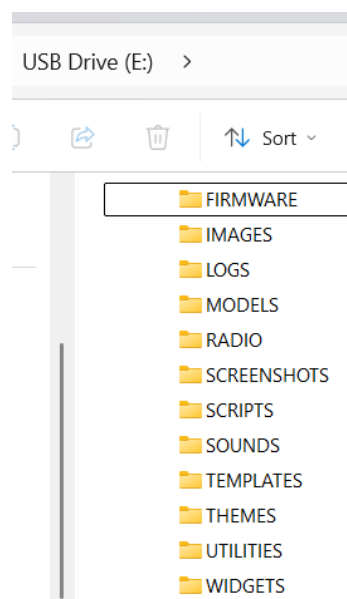
## How to do it

### Splash screen

Simply find a photo that you like, resize it to 480x272. You can add text or other things with Paint, Photoshop or other graphic editing software. Save it as “splash.png.” Alternatively you might give it a more descriptive name, then rename it with the generic “splash” name later.

Once you have done that, turn on your Radiomaster TX16s, then plug in the USB cable to the top USB-C connector, and the other end into your personal computer. On the Radiomaster, select “USB Storage (SD).” On the computer, you should then see a window pop up like the one on the right. If that doesn’t happen, open Windows Explorer, and look for a USB Drive.

Open the “IMAGES” folder, and rename “splash.png” something like “splash-old.png.” Then drag your new “splash.png” into the IMAGES folder. If you have given that a more descriptive name, you can drag it into the folder, then rename it “splash.png.”



Note that if you would like to change how long this is displayed when you turn on your transmitter, press the “SYS” button, then “Page>” a couple of times to get to “RADIO SETUP.” Scroll down to “Splash screen,” then pick the number of seconds you want it displayed from the drop down menu.

### Main screen background

With this one, pick a light coloured, simple background. Mine is a blue sky with white fluffy clouds here and there. Nothing more. It makes sense, given you are going to have a picture of your plane on top of it, and there will also be a fair bit of information being displayed on top of it.

Again, resize it to 480x272. Save it as “background.png.”

Open the “THEMES” folder, and find the one that you are using. Mine is “EdgeTX.” If you are not sure, on your Radiomaster, Press the “SYS” button, then “Page>” until you get to the artist palette icon, “THEMES,” and the selected theme will have a tick/check mark next to it.

Open that folder (“EdgeTX” or whatever) and rename “background.png” something like “background-old.png.” Then drag and drop the new “background.png” into that folder.

## Model images

You can simply make 192x96 png images of the planes, and copy them into the Images folder with a short descriptive name without spaces. Eight characters for the main part of the file name is fine. If you put in too many, it will just not show up when you look through the list of images from the transmitter screen. But what will really set you apart is to remove the background from the images, just showing the plane, drone or helicopter with a clear background, so it will appear to be flying through the sky. The png file type allows that to be done.



When you photograph a plane, set it on a plain surface, like a concrete driveway, and take the photo so it is positioned similar to the example above. This works well because the image will be placed on the right side of the screen, and its nice having it coming towards you, moving towards the center. The plain background will assist your software in separating the background from the plane itself.

In the associated video on our YouTube channel I show you how to do this relatively easy with Corel PaintShop Pro. It’s a relatively low cost graphic editing app, with lots of capabilities. A better, but more expensive one is Adobe Photoshop. And, of course, I’m sure there are many others.

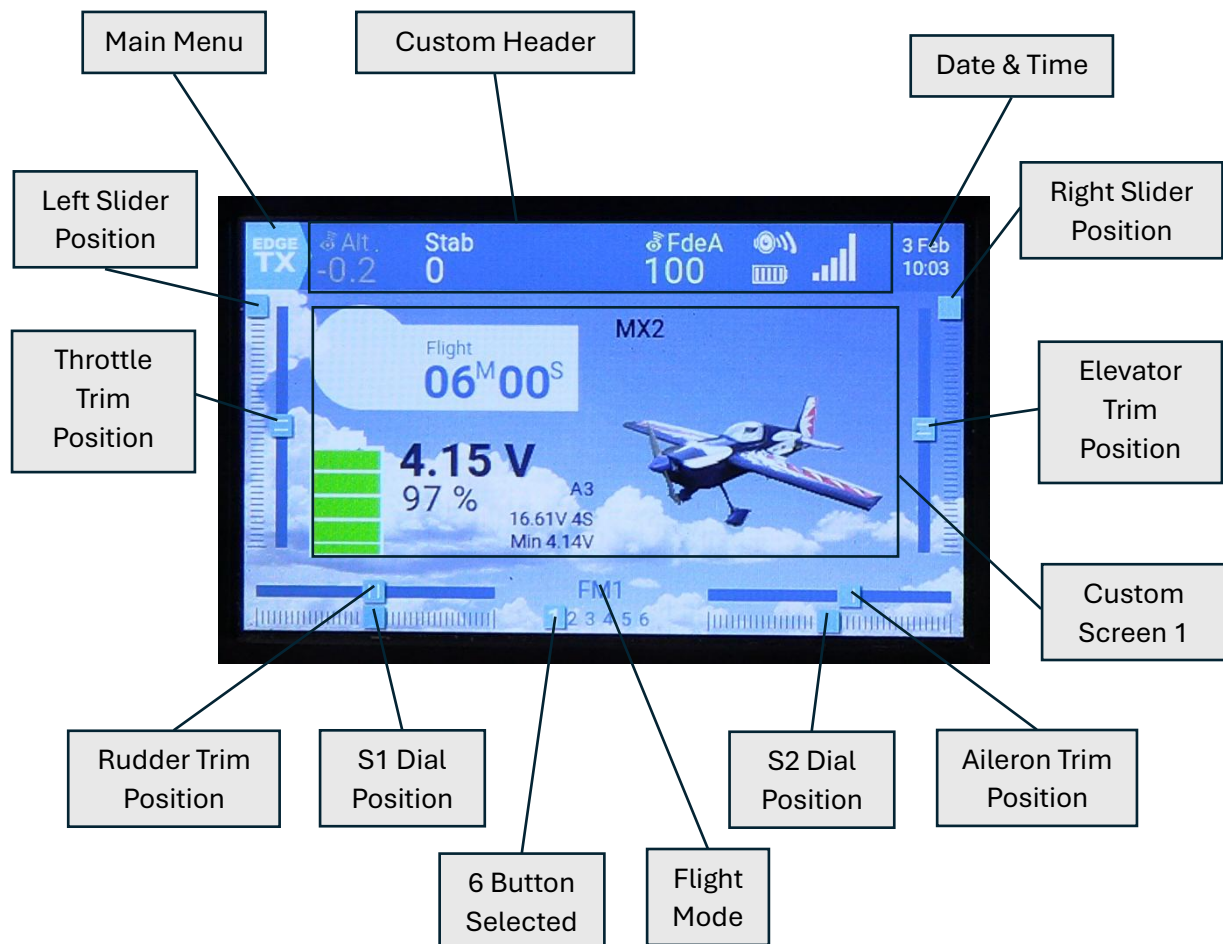
## Other customization

Your Radiomaster TX16s has extensive capabilities of customizing the screen displays. Personal preferences will determine precisely what you display, but what we recommend, is that you set it up the way you like it on a template that you use for new planes, and that you make it the same for all of your existing planes.

A picture is worth a thousand words, and a video is worth a full book, so we highly recommend that you watch our video to understand this best. But here we will provide a few pointers that can help you remember what you saw on the video!



## Standard screen components

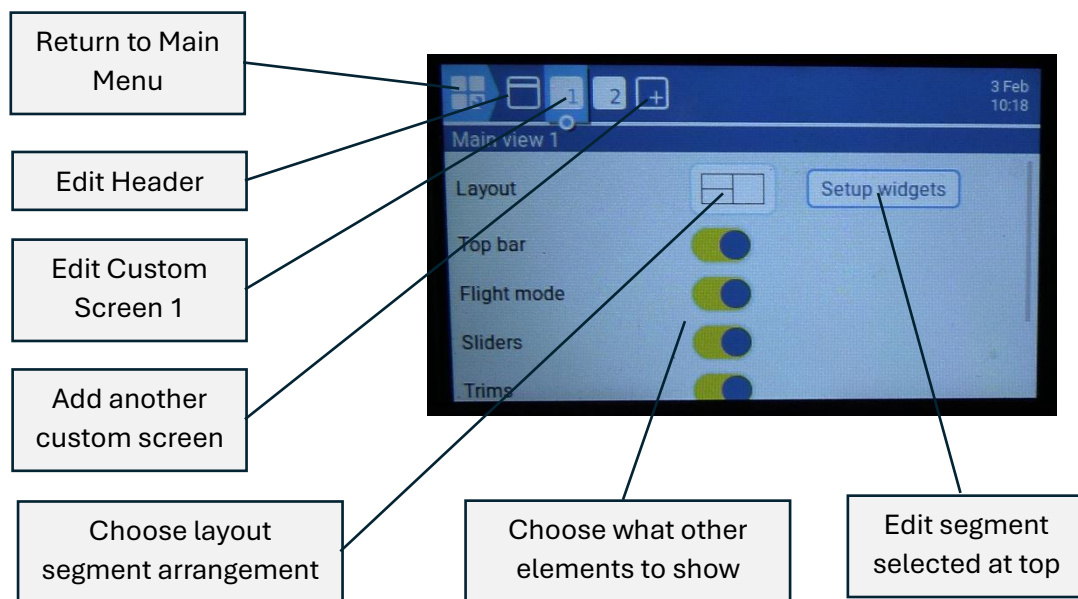


## Customizing the screen

Touch the “Edge TX” icon (upper left) to go to the Main Menu.

In that menu, touch “Screen Settings.”





When you are in “Setup widgets” where you can edit the content of a segment, just touch the area that you want to edit, and it will allow you to either select a widget for that spot, or edit the settings on a widget that’s already in that spot.

What widgets are available depends on what you have uploaded with your firmware. Some will work fine with what you have, others may require specific hardware to be added, specific telemetry.

Given that you are going to use a receiver with telemetry, make sure your transmitter is updated regarding what is available.



On the Radiomaster, from the main screen, press the “MDL” button, then “Page<,” which will take you to the “TELEMETRY” screen. Scroll to the top and touch “Discover new.” Give it 15 seconds or so to find them all, then you can go back to the main screen.

## Here are my thoughts on a few of the widgets:

Large battery display on the main screen: use “BattAnalog.” I’ve had problems with others either not working or not being there the next time I fly. You need a receiver with telemetry for this. Select “A3” for the sensor. Pick a dark color – that’s for the digits showing the voltage, etc. Do not tick “Show Total Voltage” – let it display individual cell voltage. That way you don’t need to think about how many cells your battery has and what the total voltage should be. Select Lithium Ion, and you probably do not have a Lithium HV battery.

“Model Info” is what has the picture of your plane in it as well as its name. It will help to make sure that you have the right one selected. The color is again for the printed characters – model



name. So, pick something dark, and you might want a larger size. Do not select “Fill background.”

If you need to remove a screen, select it in the display menu, then scroll to the bottom and select “Remove screen.”

I display some values across the top of the screen in the header. As the header is darker on mine, I choose white for the values that I see as really important, and light grey for the others.

Alt: altitude (a standard Lemon RX stabilized receiver with telemetry has this built in.

Stab: the position of my stabilization selector switch. Note that the gain that I have set on S1 will be shown on the bottom left of the screen.

FdeA: the RSSI signal strength on a scale of 0-100. That’s the strength of the control signal from the transmitter received by the plane’s receiver.

Radio info: Graphics showing whether the sound is turned on, transmitter battery level and RSSI signal level.

When you are flying or working with your plane, you can access the second and succeeding screens by pressing the “Page>” button. On the second screen I like to continue to have the timer and battery voltage on the left, in case I have this displayed while flying. But, in the right panel, I like to have the control values displayed. For that, first of all, make sure you have a screen segment large enough to show enough of the channels. A quarter screen will give you four. A half screen is good for nine. You can also use multiple screen segments if you need more. Just specify the channel number that you want that segment to start with.

I trust that this information has been helpful to you. If you haven’t done so already, be sure to watch the YouTube video, as it will explain things in detail. If you have questions or tips to share, please leave them under the relevant YouTube video. I personally respond to them all.

Buy me a coffee? I put a lot of work into my videos, as well as a document like this. If you have found it helpful, were we to meet near a café, I’m sure you would invite me to have a coffee with you. That’s rather difficult when we are just sharing via computer. But by clicking on the icon below you will be taken to the “Buy me a coffee” website, which is a secure way for you to donate something to the cause, and encourage me along the way. Thank you in advance!



[buymeacoffee.com/rcjim](https://buymeacoffee.com/rcjim)